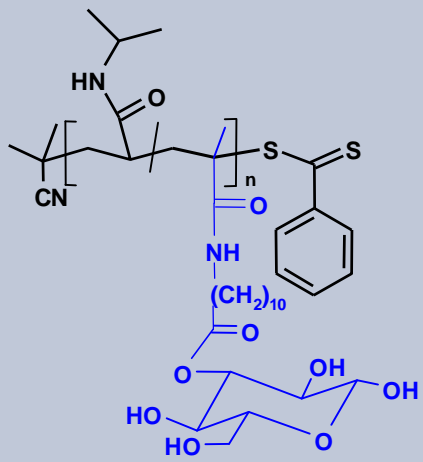
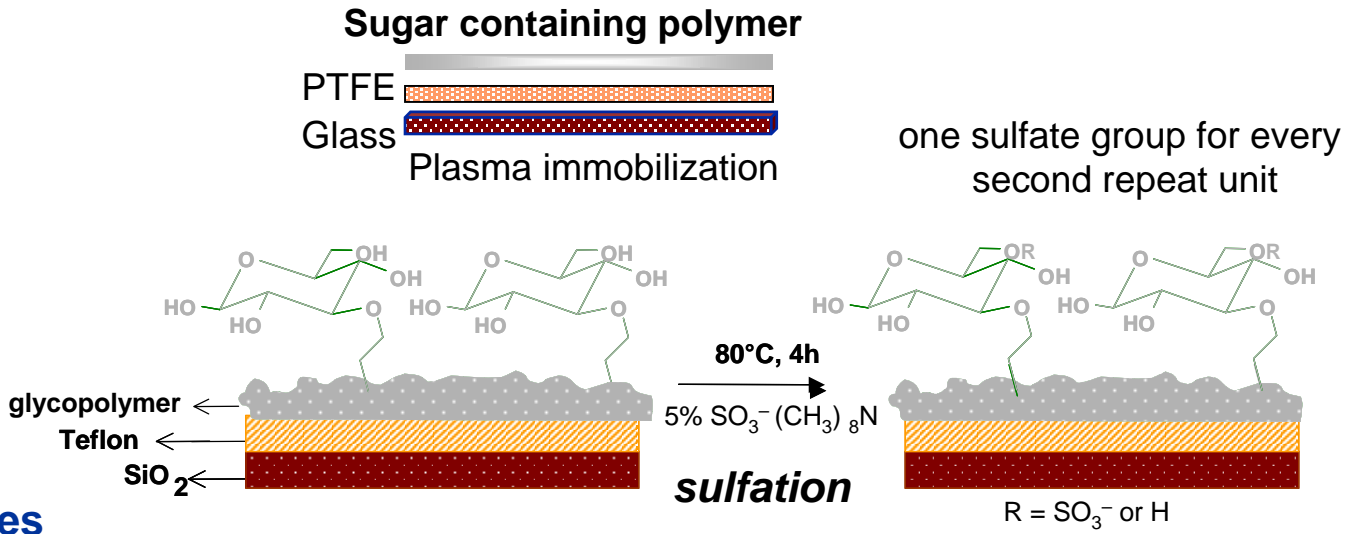


Immobilized thermoresponsive glyco block copolymers



BC 7,
40 mol% sugar

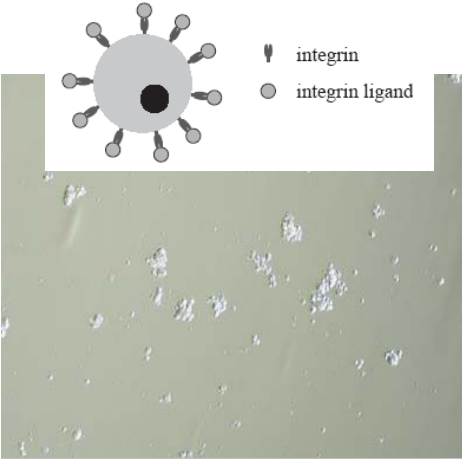
→ *Heparin like cell interactions can be mimicked*



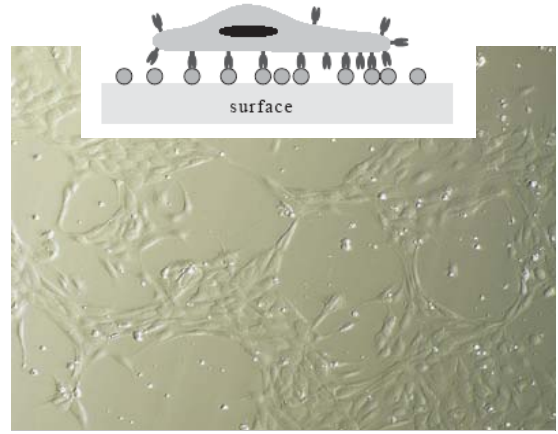
Endothelial cell cultures

Phase contrast images of EC cultivation (FGF+ FN-) on sulfated polymer surface after 2 days

Cells proliferate well without FN and serum!



2 days: non-sulfated: apoptosis,



sulfated: proliferation